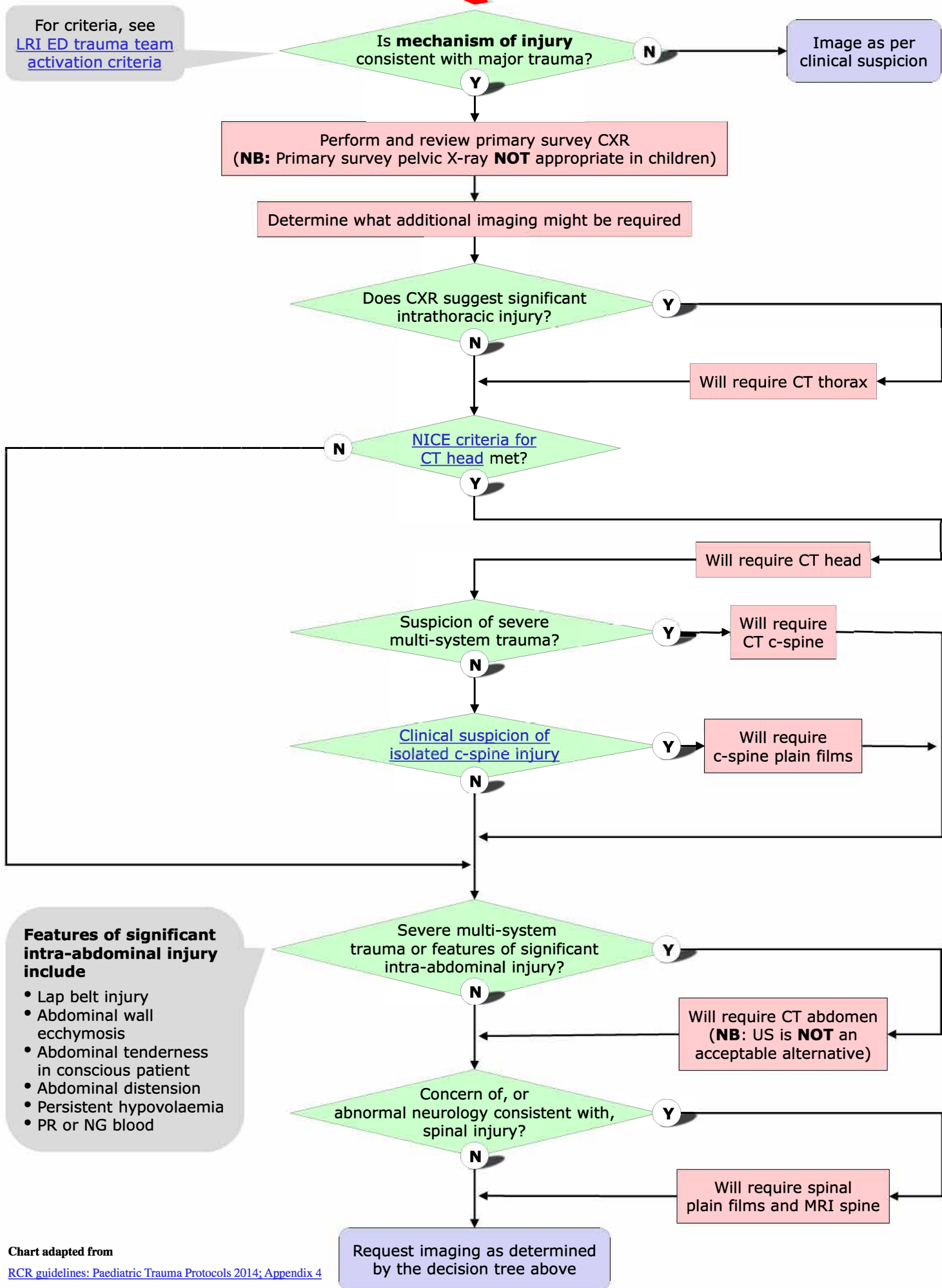


LRI PED major trauma truncal imaging decision tool



For criteria, see [LRI ED trauma team activation criteria](#)

- Features of significant intra-abdominal injury include**
- Lap belt injury
 - Abdominal wall ecchymosis
 - Abdominal tenderness in conscious patient
 - Abdominal distension
 - Persistent hypovolaemia
 - PR or NG blood

Chart adapted from [RCR guidelines: Paediatric Trauma Protocols 2014; Appendix 4](#)